



KM-PCS 3.2

Features

- ➡ Closed-loop pressure control
- ➡ Built-in mass flow metering
- ➡ Stage I - Continuous running
- ➡ Stage II - Dual-layer/composition coatings
- ➡ Stage III - Twin Deposition Guns
- ➡ Multiple gas compatible (He, N₂, Ar & mixtures)

Deposition Nozzle

- Friction Compensated, Sonic Design
- Long-Life Cemented Carbide Material
- Line-of-sight Process
- Max. Deposition Temp: 700°F (370°C)



Thermal Conditioning Unit

- Nozzle Integrated, 2.5kW
- Stainless Steel Powder Injection Tube
- Integral Mixing Chamber
- Light-Weight, Low Thermal Inertia

Dual Powder Fluidizing Units

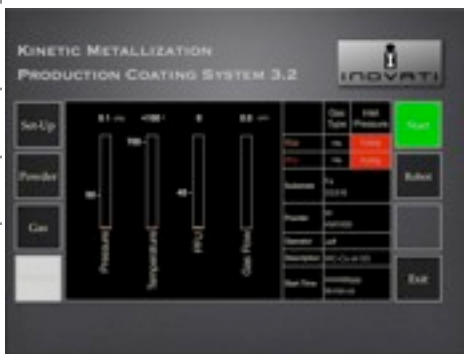
- Patented Brush-Sieve Design
- Light-weight pressure vessel
- Proven Consistent Feed Rate
- Powder Size: 500nm - 50µm
- Feed Rate: 1-100g/min

Pressure Control

- Low Pressure Operation: 275 - 895kPa
- Low Gas Flow Rate: He: 620slpm max, N₂: 225slpm max, Ar: 200slpm max
- Low Inlet Pressure: 1MPa

KM System Control

- Fully Integrated Control Software
- Real-time Human-Machine Interface
- Complete System Data Logging
- Quality Technical Support



KM Process Display

- Easy-to-use Integrated Robot Control
- Localized User Display
- Real Time Process Parameter Change

Experience the KM™ Advantage

View the KM-CDS demo at www.inovati.com/kmdemo

PO Box 60007 • Santa Barbara, CA 93160 • www.inovati.com
SALES +805-571-8384 • Fax +805-571-6200 • sales@inovati.com

© 2009 Inovati. All Rights Reserved. Dimensions and specifications are subject to change.